



detailed engineering

Extension to the paediatric and youth psychiatry department, Aachen University Hospital



the project

The paediatric and youth psychiatry department is situated in the landmarked 'Großer Neuenhof'. The rooms are arranged around an inner courtyard. Divided into three square-sided cubes, the new building by Heinle Wischer und Partner continues on these features.

The property with numerous existing trees, has a flat hillside and rises from Neuenhofer way to the eastern boundary of the property.

For all trades, the execution planning is performed as a subcontractor.

project data

client:	Universitätsklinikum RWTH Aachen
location:	Aachen University Hospital
services:	detailed engineering
area:	health
scope of services:	HOAI service phase 5
completion:	2018
period:	03/2015 - 01/2018
GFA:	4.621 m ²



entrance, paediatric and youth psychiatry department



corridor with reception area of ??the ambulance

The ambulance and therapy rooms and a multi-purpose room with a spacious terrace are arranged on the ground floor. The clearly readable, quieter three stations lie above it. Easily findable stairs and lifts open up all areas barrier-free. The externally protected care areas with patient rooms, treatment and office rooms as well as openly designed communal living areas are organized around homely courtyards.



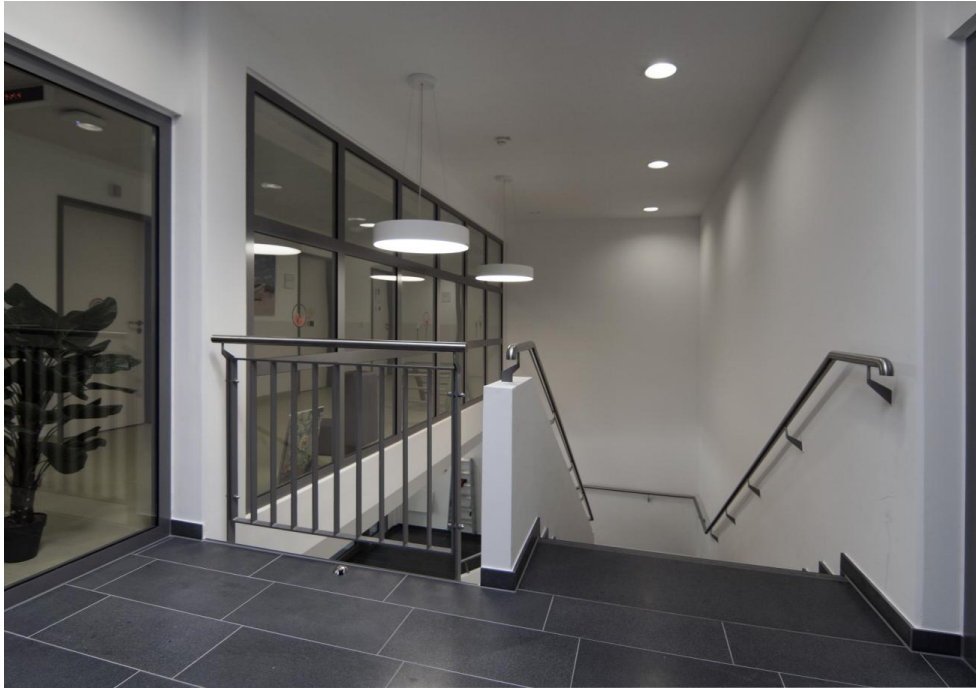
square cubes and differentiated open spaces are lined up



looking down the hallway between glass walls



station corridor on the 1st floor and stairs to the ground floor



stairs to the ground floor



view along the outer facade at 'Neuenhofer Weg'



sitting room

Beyss Architekten GmbH
Haydnstraße 36
53115 Bonn

T +49 228 9 45 54 52-0
F +49 228 9 45 54 52-90

office@beyss-architekten.de